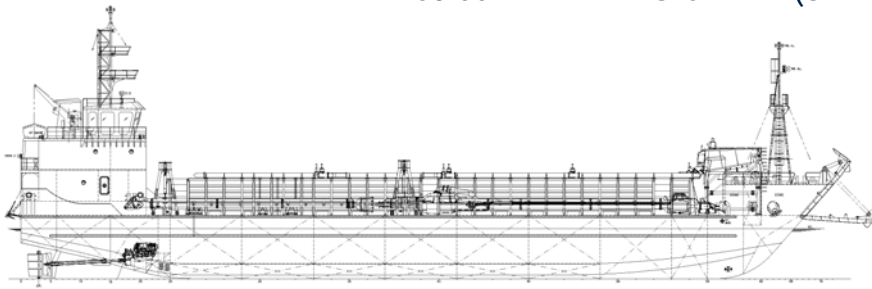
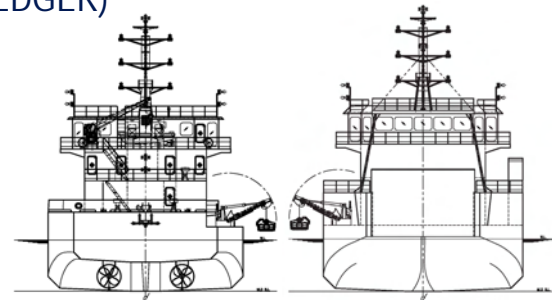




## 68.00M LANDING CRAFT (SAND DREDGER)



PROFILE



STERN VIEW

FWD VIEW

### PRINCIPAL PARTICULARS

Built	: 2018
Hull No.	: BJ 98
IMO No.	: 9864605
Length Overall	: 68.00m
Length Waterline	: 64.753m
Breadth MLD.	: 16.00m
Depth/Design Draft (MLD.)	: 5.30m/4.20m
Sand Bin Area	: 435m <sup>2</sup> approx.
Accommodation	: 8 Men
Design Speed	: 10 Knots
Classification	: Bureau Veritas

### MACHINERY / PROPULSION

Main Engine	: 2 x Caterpillar C32 ACERT 1000bhp @ 1800rpm
Gear Box	: 2 x Reintjes WAF 562L ratio 5.05:1
Main Generator	: 2 x Cummins 6BT5.9 - D(M) 78ekW alternator @ 1500rpm
Emergency Generator	: 1 x Cummins 6BT5.9 - D(M) 78ekW alternator @ 1500rpm
Propeller	: 2 x 4 blades fixed pitch open propeller in a nozzle
Steering Gear	: 2 x 3.0T-M tie bar steering gear system
Bow Thruster	: 1 x Kamome TFA-50 5.0T @ 1200rpm, engine driven
Truster Prime Mover	: Cummins QSM11-M 450bph @ 2100rpm c/w ZF gear box ZF325-1 (ratio 1.727:1)

### CARGO CAPACITY

Fuel Oil	: 299 cu.m
Fresh Water	: 230 cu.m
Fresh Water Storage	: 91 cu.m
Sand	: 2000m <sup>3</sup> approx

### NAVIGATION / COMMUNICATION EQUIPMENTS

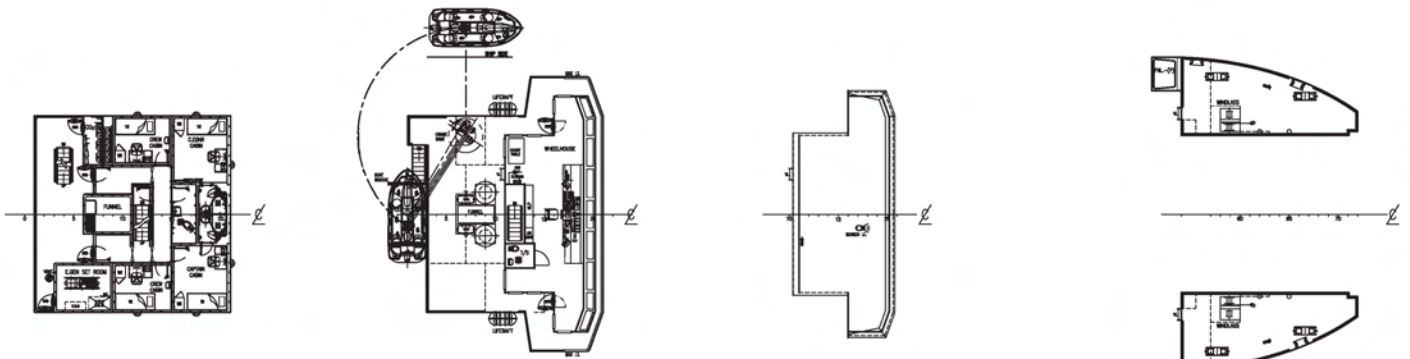
GMDSS Unit	: 1 x Sailor 6310 with Dual Inmarsat-C (areas A1-2-3)
Inmarsat-C	: 1 x Sailor 6110
VHF	: 2 x Sailor 6222
Gyro Compass	: 1 x Standard 22 Compact
Navtex Receiver	: 1 x Sailor 6391
AIS	: 1 x FA-170
EPIRB	: 1 x Sailor SE406-II
Magnetic Compass	: 1 x SR2-150PK
GPS	: 1 x GP-170
Speed Log	: 1 x DS-80
Search & Rescue Radar Transponders	: 2 x Sailor SART-II
Primary Radar	: 1 x FAR-1518; 96NM
Secondary Radar	: 1 x M1935; 48NM
Echo Sounder	: 1 x FE-800; dual frequency 50 & 200kHz

### DECK EQUIPMENTS

Anchor & Chain	: 2 x Stockless anchor 1740kg 16 x 26mm dia. grade U2 steel chain cables stud link chain
Stern Anchor	: 1 x Stockless anchor 1740kg 200 x 36mm dia. SWR
Hydraulic Stern Winch	: 1 x HY AWD WR36 8T Electro- hydraulic, 8T @ 15M/min c/w single drum
Ramp & Anchor Winch	: HY RAW C36 8T Electro- hydraulic, 8T @ 15M/min c/w 1 gypsy, wire reel & warping drum
Rescue Boat & Davit Crane	: 1 unit x 6 men, 4.5m length x 1.85m F.R.P. rescue boat, SWL 2.1T

### DREDGING EQUIPMENTS

Dredge Pump	: 380kW
Jet Pump	: 140kW
Main Generator	: CAT C32 830kW

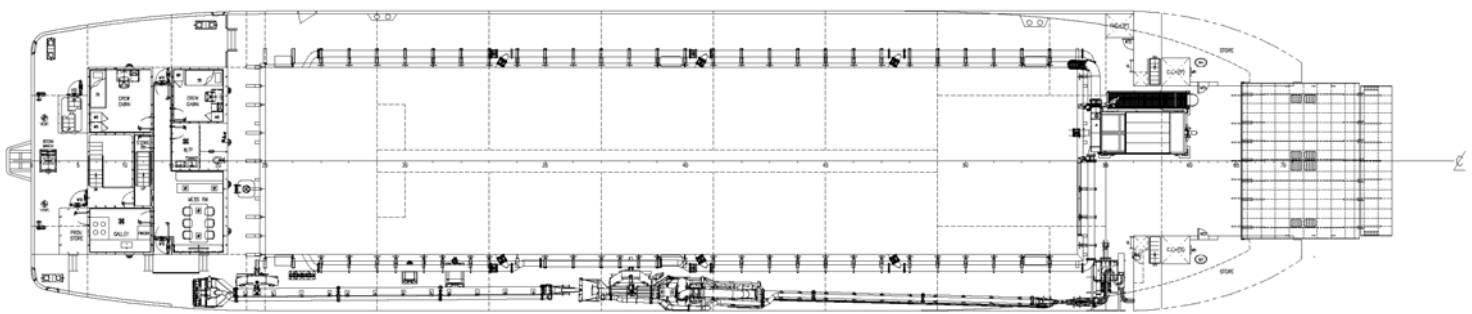


BOAT DECK PLAN

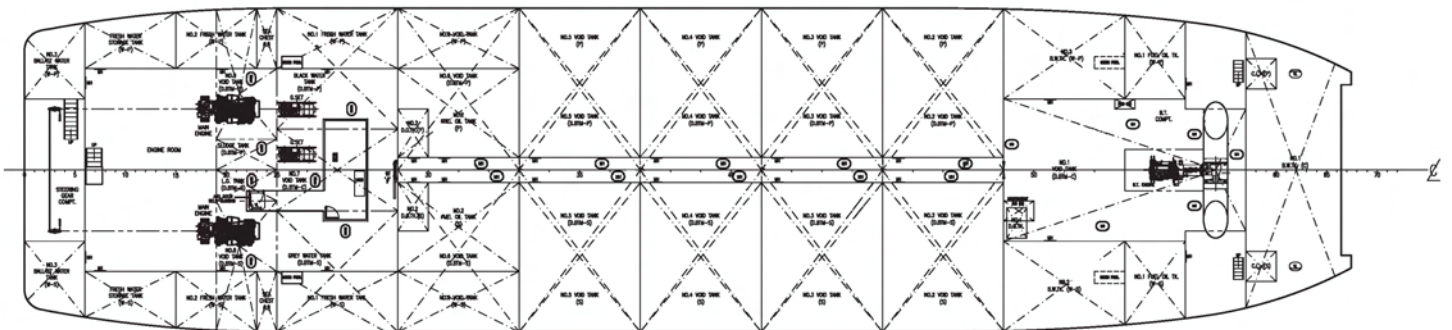
NAV. BRIDGE DECK PLAN

WHEELHOUSE TOP

FORECASTLE DECK PLAN



MAIN DECK PLAN



BELOW MAIN DECK PLAN

For more information, please feel free to contact us at  
Lot 285, Kuala Baram Industrial Estate, Kuala Baram-  
Brunei Border Road, 98008 Miri, Sarawak, Malaysia.

Tel: +6085-605 888 | Fax: +6085-605 755  
Email: [admin@berjayadockyard.com](mailto:admin@berjayadockyard.com)

[www.berjayadockyard.com](http://www.berjayadockyard.com)